



## Core Landing Zone

Building a secure and governance-driven Azure Landing Zone

### The Challenge

Many times moving to the cloud starts with a proof of concept of a new modernized workload or migrating a workload from on-premise. These proof of concepts often find their way into production usage but lack the core secure and governance controls needed as you extend your data center and applications to the cloud.

### The Solution

Transform your Azure cloud environment with our 5-week implementation to establish your enterprise core landing zone. Our tailored solution prioritizes components of the landing zone that will provide the most value for the cloud strategy that you have defined.

We merge top-tier industry practices with Azure's formidable features, ensuring a secure, adaptable, and top-performing landing zone primed for your cloud workloads that can be easily extended to provide Data and AI landing zones on top.

Spyglass follows the Microsoft Cloud Adoption Framework as we are building out and setting up your core Azure foundation and the following areas are reviewed/discussed/improved as needed during our landing zone build out:

### Define/Refine Strategy

- Cloud strategy along with any business or technical objectives you have by moving to the cloud

### Plan Cloud Usage

- Define a high-level list of workloads that are targeted for the cloud
- Review current organizational structure and define recommendations around roles/responsibilities along with providing a skilling breakdown with resources that will help upskill administrators based on current skill levels.

### Adoption Strategy

- Help define an adoption strategy around what to migrate, how to modernize and when to innovate on Azure.

### Are You Ready

- Core network configurations around architecture, hybrid connectivity, network security, DNS and others
- Secure administrative access including access control assignments for the management plane and data plane activity

### Governance Capabilities

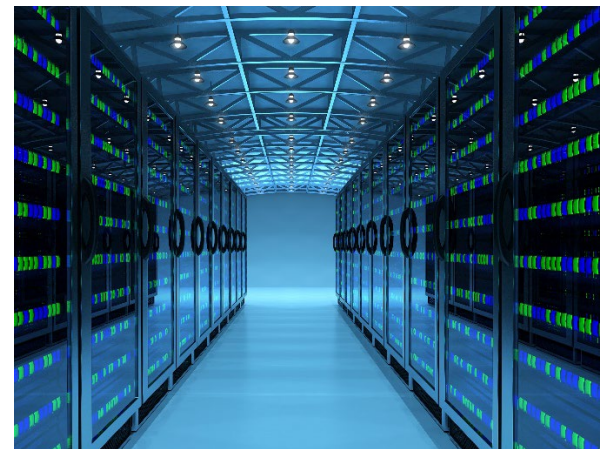
- Naming Standards
- Resource Tagging
- Azure Policy
- Cost and Life Cycle Management

### Key Features

- Define Deployment Strategy
- Scalable and Secure platform
- Monitoring
- Integrated Governance

### Deliverables

- Core Landing Zone
- Roadmap for continued improvement
- IaC to manage landing zone

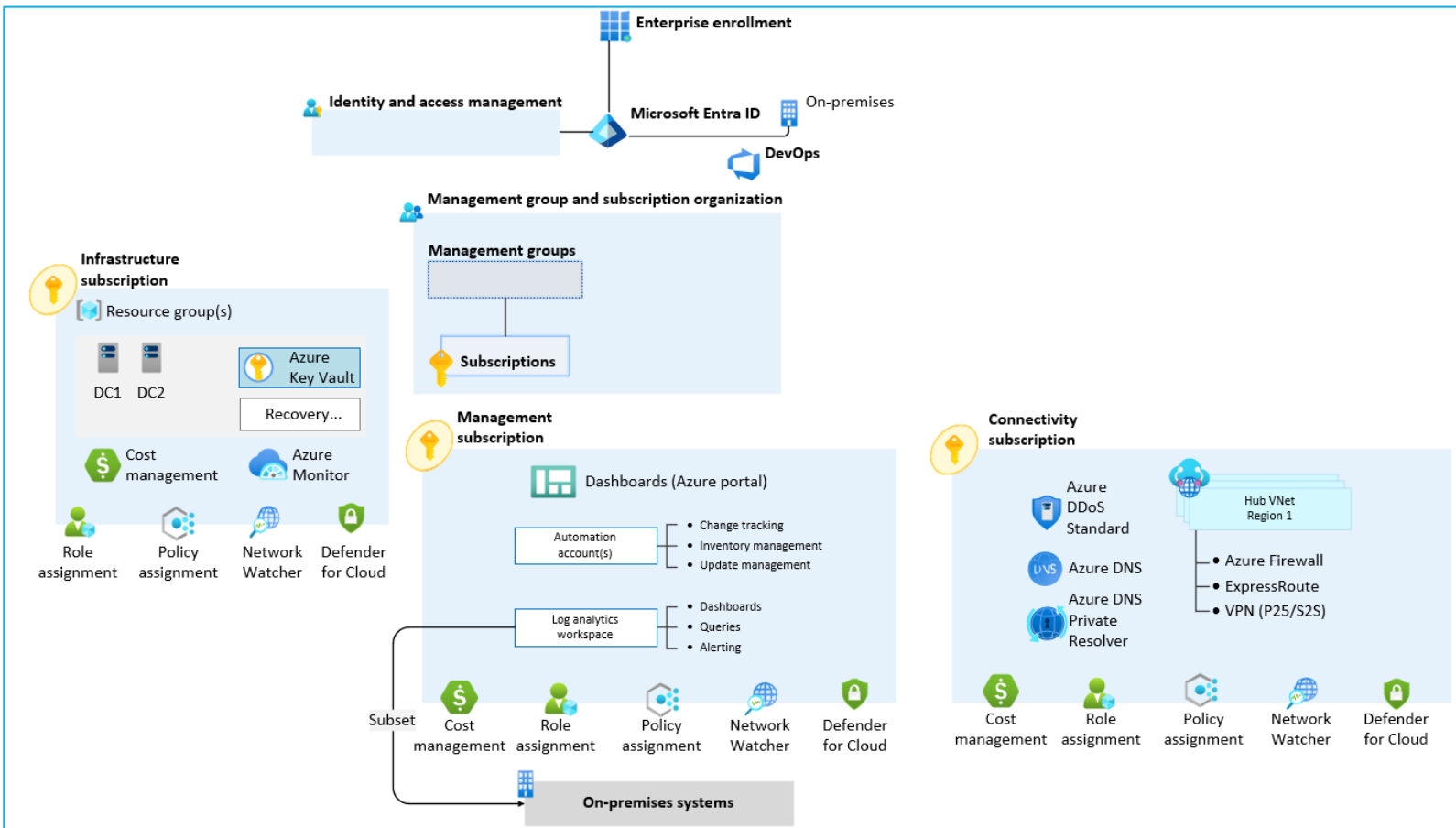
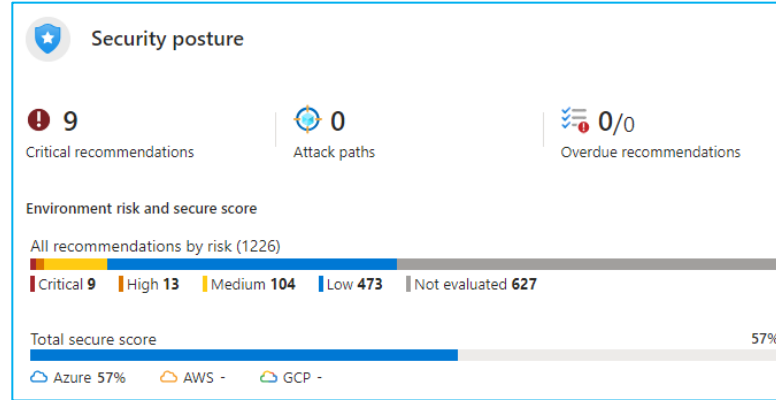


## Strong Management Controls

- Resource Management Hierarchy
- Cloud and System Monitoring
- Backup and Recovery Configuration and Planning
- Deployment Automation and Infrastructure as Code

## Secure Cloud Controls

- Defender for Cloud configuration and usage
- SIEM Integration for security monitoring
- Encryption standards and usage
- Data Retention, Labeling and Discovery needs



We can help you build a secure and governance-driven Azure Landing Zone. [Contact us today!](#)

## About Spyglass MTG- A Women Owned/Women Led Company

For over 15 years, we've partnered with Microsoft to expertly deliver their vast and ever-evolving suite of enterprise solutions to clients. Specializing in Data, AI, and Security services on the Microsoft clouds, we can help you select, architect, implement, migrate to, and manage your Microsoft products. With Spyglass as your trusted ally, you can securely harness the power of Microsoft technology to drive strategic business decisions, optimize processes, predict customer behavior, spot market trends, and empower your business to stay ahead in today's competitive landscape.



Infrastructure Azure  
Data & AI Azure  
Digital & App Innovation Azure  
Modern Work  
Security